

Simsol 5.0 Network Installation Guide

Nov. 7, 2011

simsol

Copyright © 2011 – Simultaneous Solutions Inc. All rights reserved.

No part of this document may be reproduced or transmitted in any form or by any means electronic or mechanical, for any purpose without the express written permission of Simultaneous Solutions Inc. Information in this document is subject to change without prior notice.

Certain names of program products and company names used in this document might be registered trademarks or trademarks owned by other

Microsoft and Windows are registered trademarks of Microsoft Corporation.

Simultaneous Solutions, Inc.

3452 Lake Lynda Dr. Suite 420
Orlando, Florida 32817
<http://www.simsol.com>
U.S.A.

For Sales and Technical Support:
Tel: (800) 447-4676
Fax: +1 (407) 384-9216

Sales email:
sales@simsol.com

This guide is frequently updated to reflect changes in the product. The latest version can always be found at
<http://www.simsol.com/downloads/networkinstallguide.pdf>

This guide was prepared for Simsol 5.0SP3 for Windows Version 7

Introduction

Congratulations, you are on your way to using one of the most advanced software tools in the property estimating industry. Simsol 5.0 is very simple to use and can be networked to allow multiple users to share, collaborate and manage a number of files at any given time. This guide will walk you through **a new network installation** and a **version update** step by step.

- **New Installation** steps begin on page 4.
- **Version Update** steps begin on page 14.

Important!

Before starting, we ask that you make sure that you are well versed in pc-based network environments and terminology. If you are not, please consider getting assistance from a qualified network administrator to ensure that you do not cause harm or damage to your existing network configuration or sensitive data stored within.

System Requirements:

Windows 7

Windows Vista (All suites)

Windows XP (Pro, Home or Media Edition)

Windows 2003 Server

Novell NetWare 4.11 and later (With Long File Names Support)

PC with Pentium 600 MHz microprocessor or higher (800 MHz Recommended)

256 MB of RAM (512+ MB Recommended)

100MB of free hard disk space

SVGA or better screen display (minimum 1024 x 768 resolution)

True Color Graphics

Installation Conflicts

It is possible that other programs currently running could interfere with the installation of your Simsol Software. Applications such as an anti-virus, automated backup, or network firewall can create conflicts, so it is recommended that you temporarily disable these items during the installation process to ensure that your installation executes properly.

Microsoft User Account Control

It is also recommended that Microsoft's *User Account Control* be temporarily turned off to prevent the Simsol installation from being hindered during the installation process. For more information on this, please do a web search for: "Disable UAC."

Apple Products and Netbooks:

Simsol 5.0 is not compatible with Apple products and is not supported. Netbooks that have less than a 1024 x 768 resolution display capability are not compatible or supported.

New Installation

To install the latest version, first download the installer from the Simsol website:
http://simsol.com/html/adjuster_downloads.html

The installation file is named: **Simsol_4_Network.exe**

(Important!) Once downloaded, you must have administrator privileges on your PC and also make sure you are seated at the network server and not one of the workstation machines.

Pre Installation Setup (mapping a network drive)

Prior to running the installation, you will first need to map a network drive that will be used as the installation destination for your Simsol software. The simplest way to achieve this is to create a folder on your Server's local drive and share it with everyone on the network. Give the folder a unique name so you will know that your Simsol installation resides in that folder.

Ensure that you have given full read & write permissions to this folder. Once shared, you will be able to map this folder as a network drive. Assign a drive letter to your newly shared folder. We use the example **S:** for this installation guide; however feel free to assign any drive letter of your choosing.



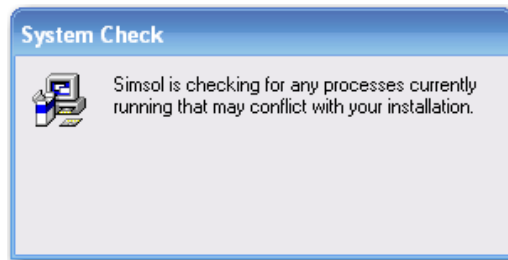
Disclaimer: a certified network technician should perform the portion described above or a person will network related experience. For liability reasons, Simsol cannot assist you with this portion of the process.

Let's Install It!

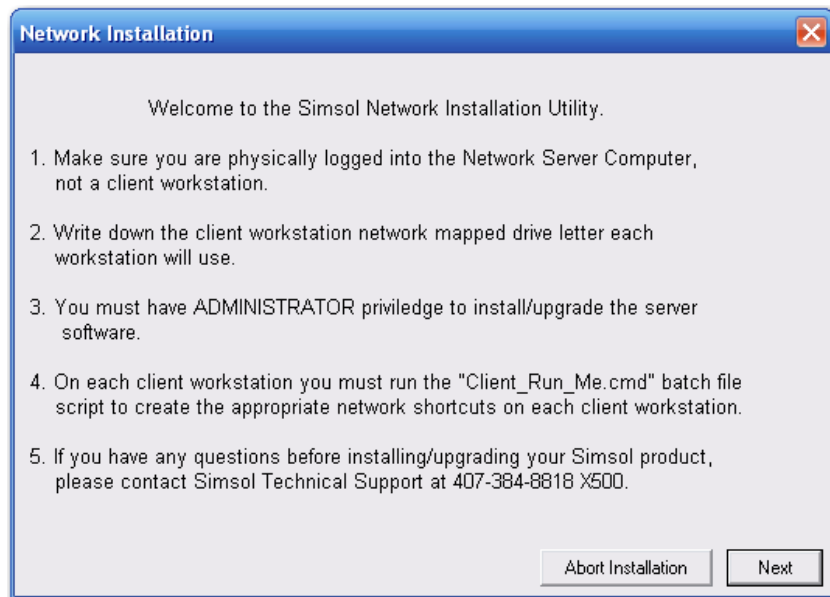
You are now ready to run the network installation. Make sure you are on the network server machine, now run the installation file that you downloaded (**Simsol_4_Network.exe.**) The installation process will begin.



Installation Initializing

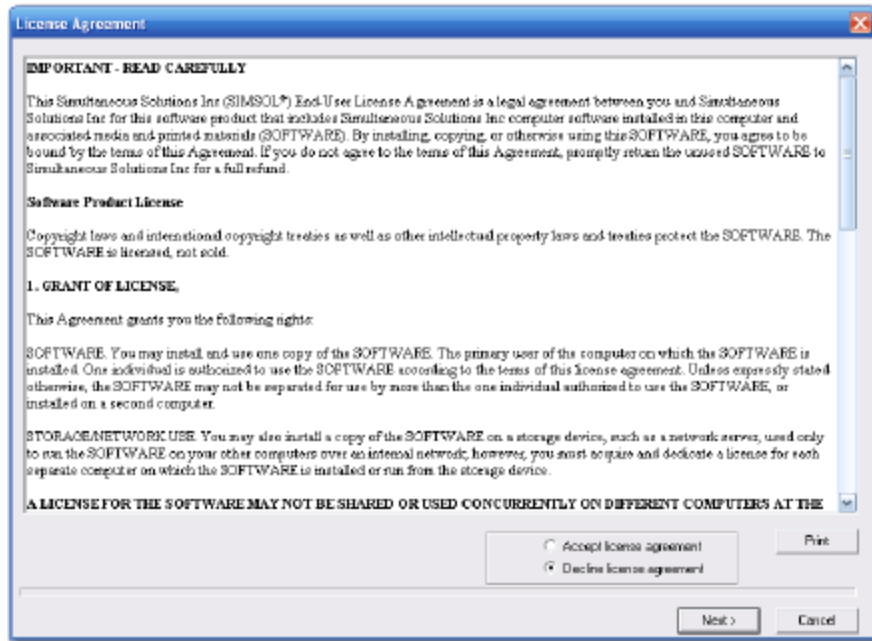


Checking for any Simsol related processes already running in memory.

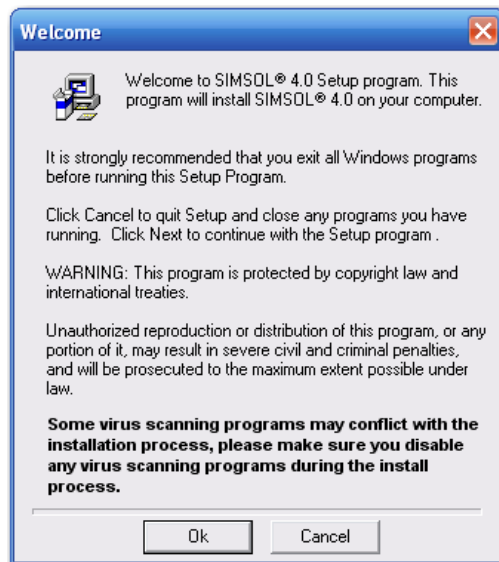


This informational window details some of the requirements need to continue the network installation. Please read this carefully. If there are items on this page that you

need help with, please contact a network administrator for assistance. If you are ready to proceed, click Next to continue.



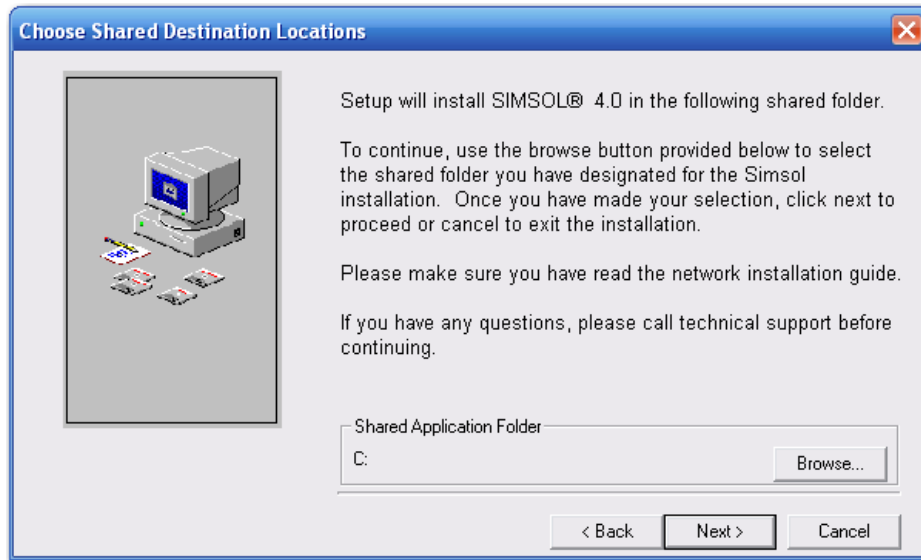
License Agreement. Click “Accept” and Next to continue.



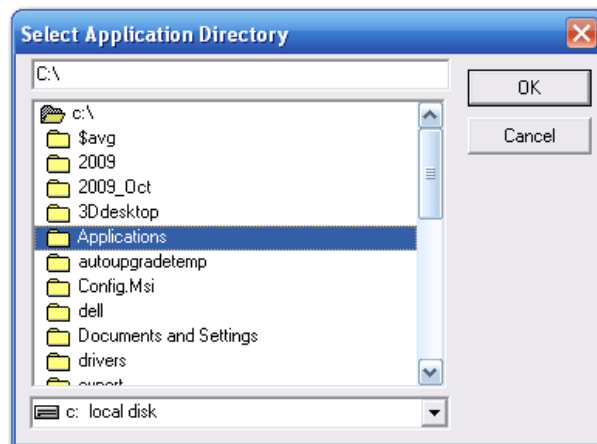
Installation Welcome Screen
Click Ok to continue



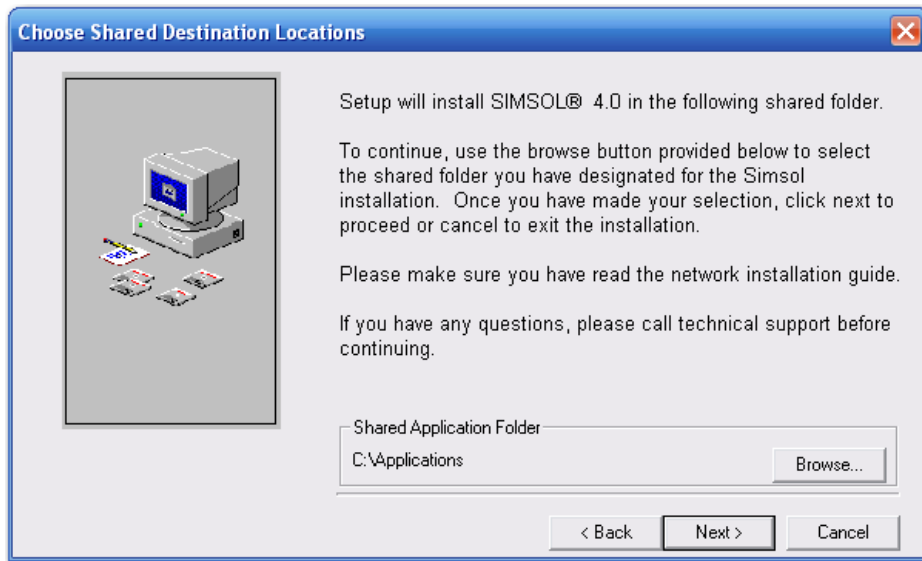
The installation will search your server machine for any prior installations of Simsol to determine whether you are performing a new installation or an update to a previously installed version. This process may take a couple minutes.



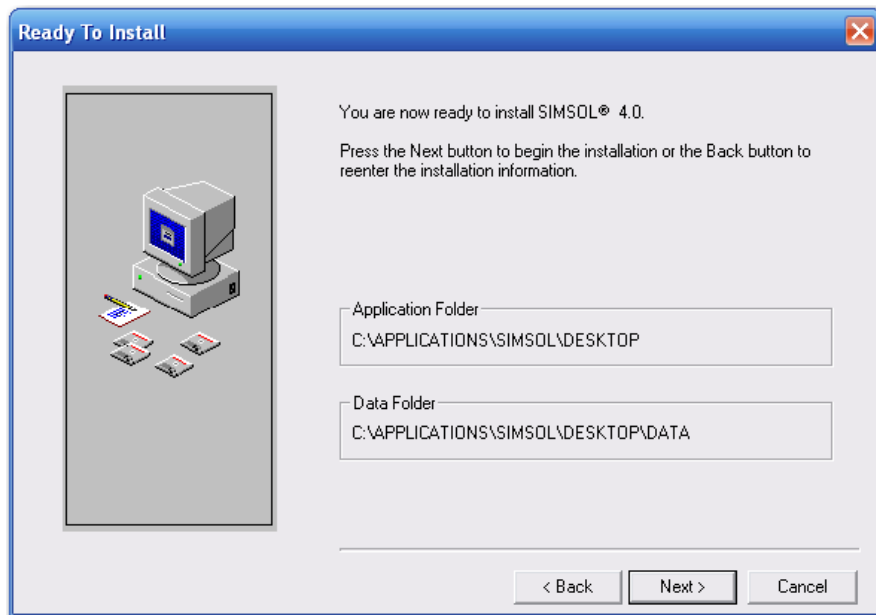
If no prior installations are found, the installer will now allow you to proceed with your new installation. To continue, you will now need to select the shared folder that you designated as the destination folder for the Simsol installation. Click Browse to open a folder selection window.



Once, you have located the shared folder, **Double Click** to select it and press the OK button.

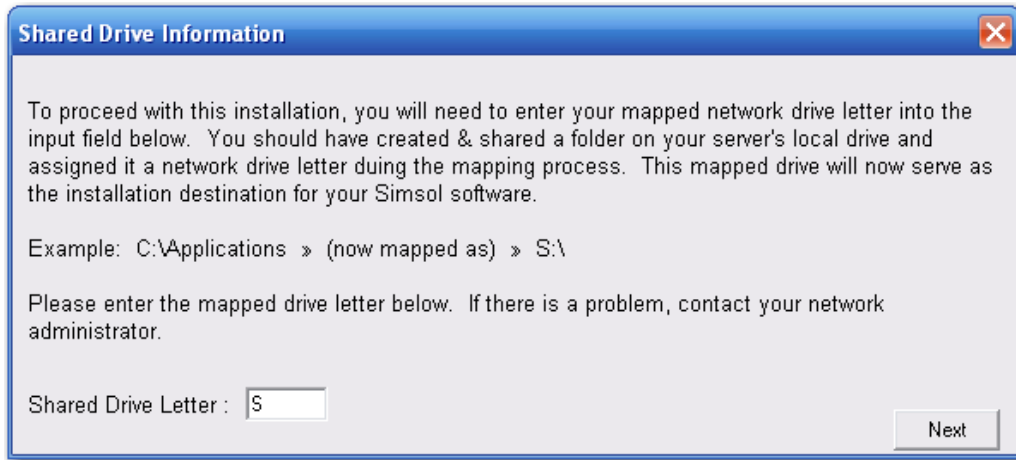


Verify that the shared folder is selected and appears in the “Shared Application Folder” section of this screen. If the folder name does not display like the example above, try clicking Browse again and reselecting the correct folder. Make sure you are **double-clicking** it to select it. Click Next to continue.

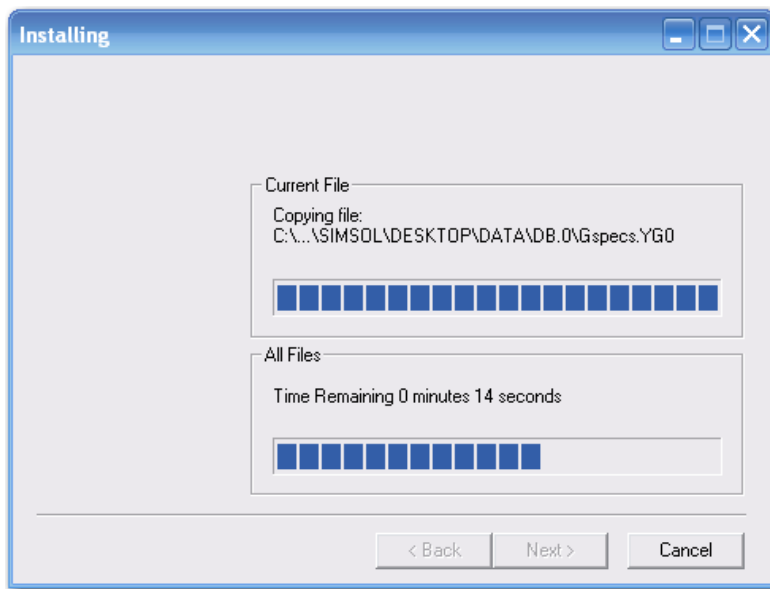


You are now ready to install the Simsol Software. Verify that the Application and Data folder paths resemble the image above. Our default installation structure includes a root folder titled “Simsol,” a subfolder titled, “Desktop,” and a third level folder titled, “Data.” Your installation path should read something like the example below:

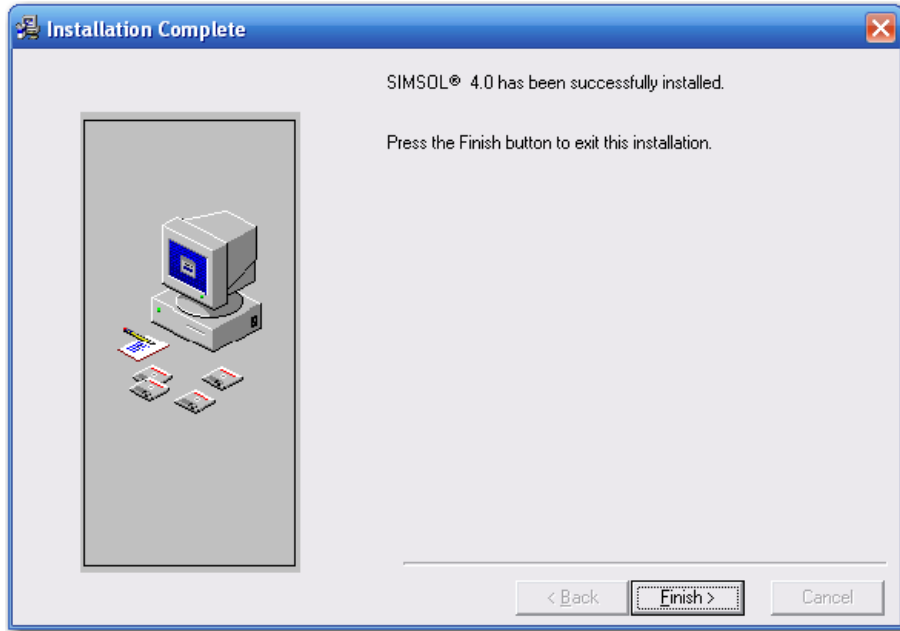
Application Folder: C:\Applications\Simsol\Desktop\
Data Folder: C:\Applications\Simsol\Desktop\Data
 Click next to continue



You will now enter the drive letter you designated to the shared network folder. Simply enter the drive letter and nothing else. Example: If you mapped the shared folder as the S:\ Drive, simply type in "S" (without quotations.) Once you've entered the correct drive letter, click Next to continue.



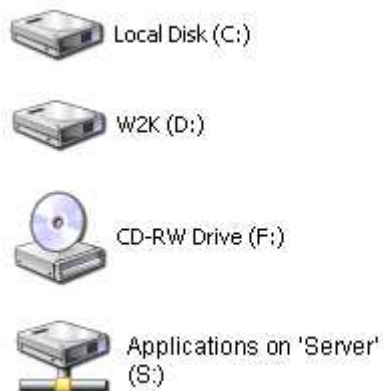
The installation routine will begin and display the progress indicator dialogue. (Shown above)



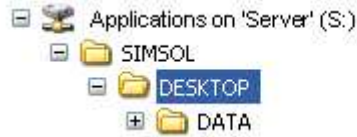
Once the process of copying data is complete, this dialogue box will appear to confirm Simsol has been successfully installed. Click Finish to exit.

Running the Client Installations

Now that Simsol is installed to your network server, it is now time to give your workstations access to the Simsol application. You will now move to one of the workstation machines and locate your Simsol directory on the mapped network drive using Windows explorer.



Open the mapped drive to display the Simsol installation folder. Open the application folder titled “Desktop” to display its contents.



In the Desktop folder, find the file titled, “Client_Run_Me.cmd” and double-click to run it.

DATA		File Folder	11/8/2011 4:49 PM
BDE_NetDir.exe	281 KB	Application	10/21/2011 9:13 AM
CheckClaimsWire.exe	558 KB	Application	10/14/2011 12:59 PM
ClaimDBCCheck.exe	384 KB	Application	10/21/2011 9:13 AM
ClaimsPrinter.exe	2,448 KB	Application	10/21/2011 9:17 AM
ClaimsWire.dll	1,676 KB	Application Extension	2/25/2011 5:02 PM
Client.EXE	7,191 KB	Application	11/8/2011 12:51 PM
Client_Run_Me.cmd	1 KB	Windows NT Comm...	11/3/2011 2:15 PM
DBAlias.INI	1 KB	Configuration Settings	11/8/2011 4:49 PM
DBCleanUp.exe	4,901 KB	Application	10/21/2011 9:17 AM
DcrawlLIB.DLL	340 KB	Application Extension	2/10/2011 9:40 AM

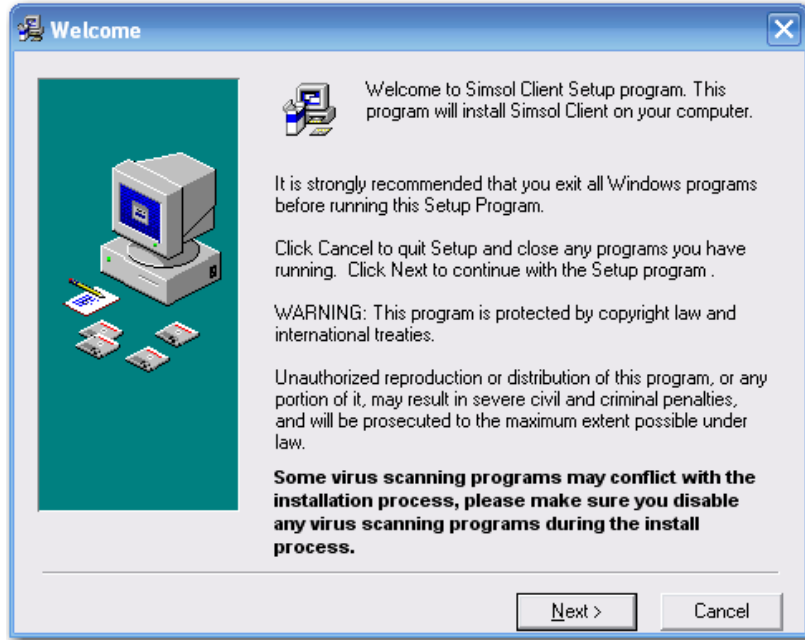
The client installation will begin.

```

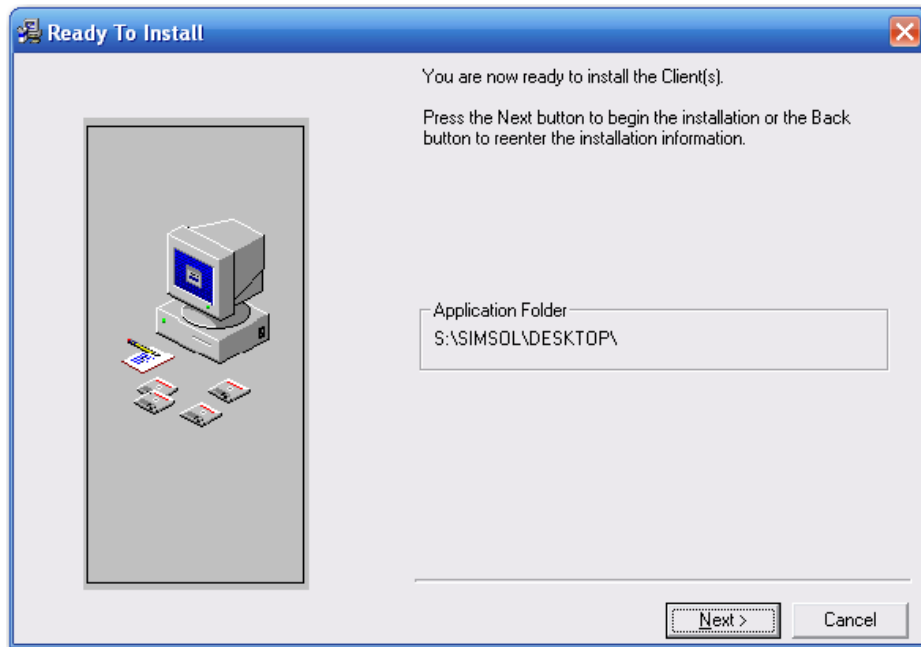
C:\WINDOWS\system32\cmd.exe
S:\SIMSOL\DESKTOP>Echo Off
Copying data to local temp folder...
  1 file(s) copied.
  1 file(s) copied.
  1 file(s) copied.
Running Client Installation...

```

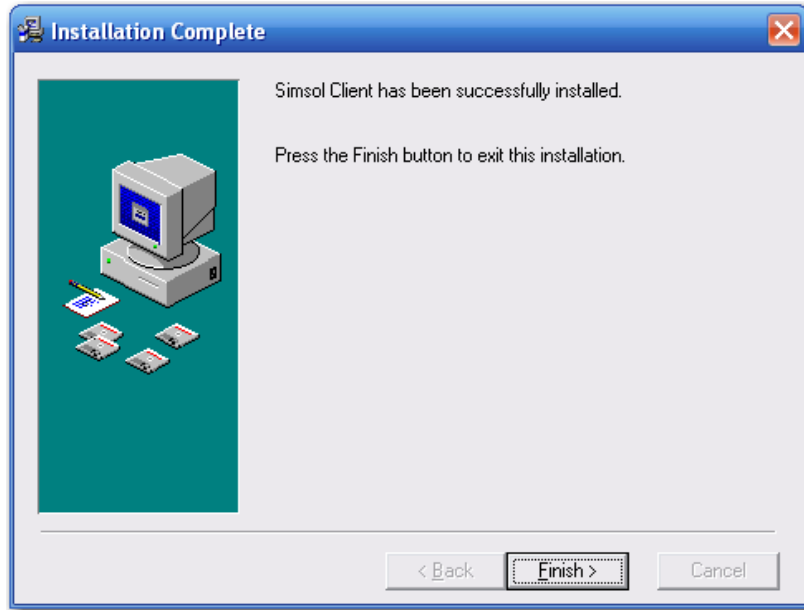
Files necessary to begin the client installation are now being copied to the workstation machine.



You are now ready to begin the client installation. Click Next to proceed.



Verify that the network path to the Simsol installation is correct. Once verified, click next to continue.



After the installation process is complete, this dialogue will appear confirming that the client installation has successfully completed. Click Finish to conclude the installation. Now locate the Simsol 5.0 icon on the workstation's desktop.



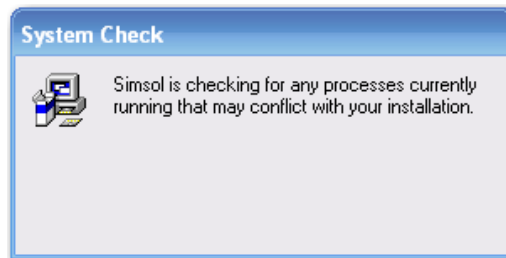
*Repeat this client installation process on any and all workstations that you have designated for accessing and utilizing the Simsol network version.

Updating a previous network version of Simsol.

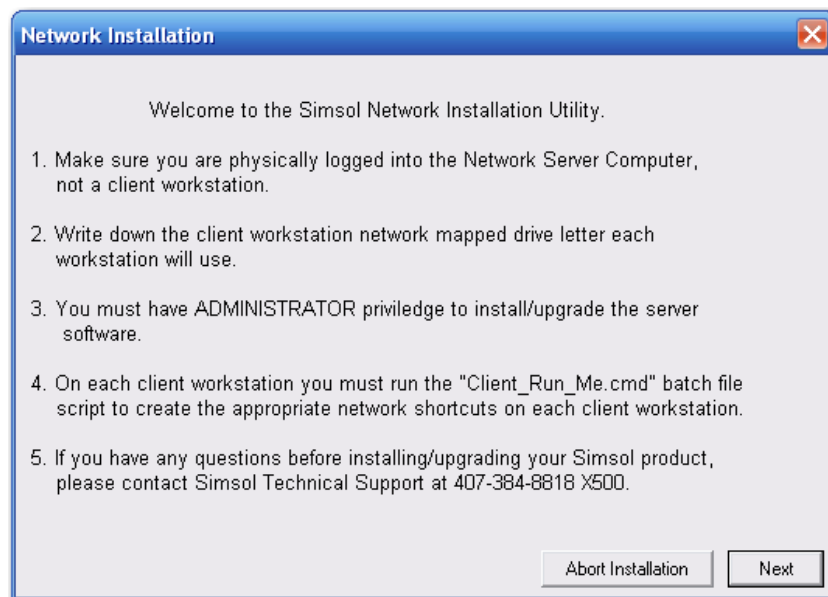
This portion of the installation guide will walk you through the process up updating a previously installed network version of Simsol. Make sure you are on the network server machine, now run the installation file that you downloaded from our website (www.simsol.com) **Simsol_4_Network.exe** and you will see the installation process begin.



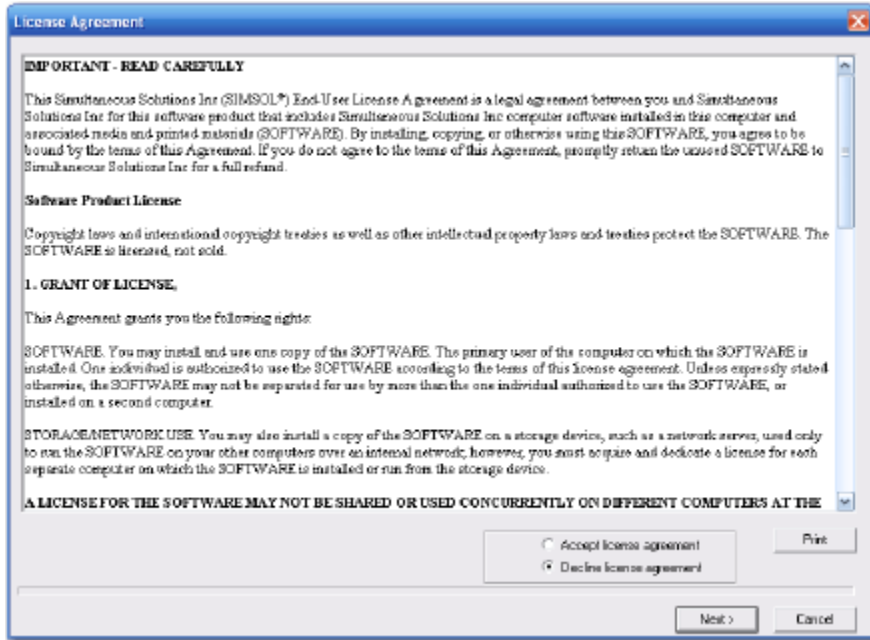
Installation Initializing



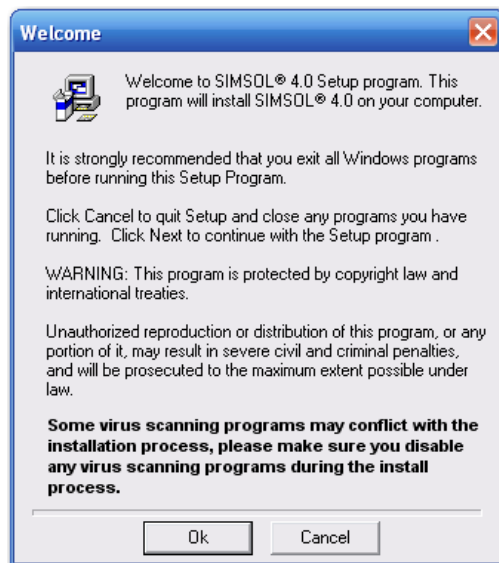
Checking for any Simsol related processes already running in memory.



This informational window details some of the requirements need to continue the network update. Please read this carefully. If there are items on this page that you need help with, please contact a network administrator for assistance. Click Next to continue.



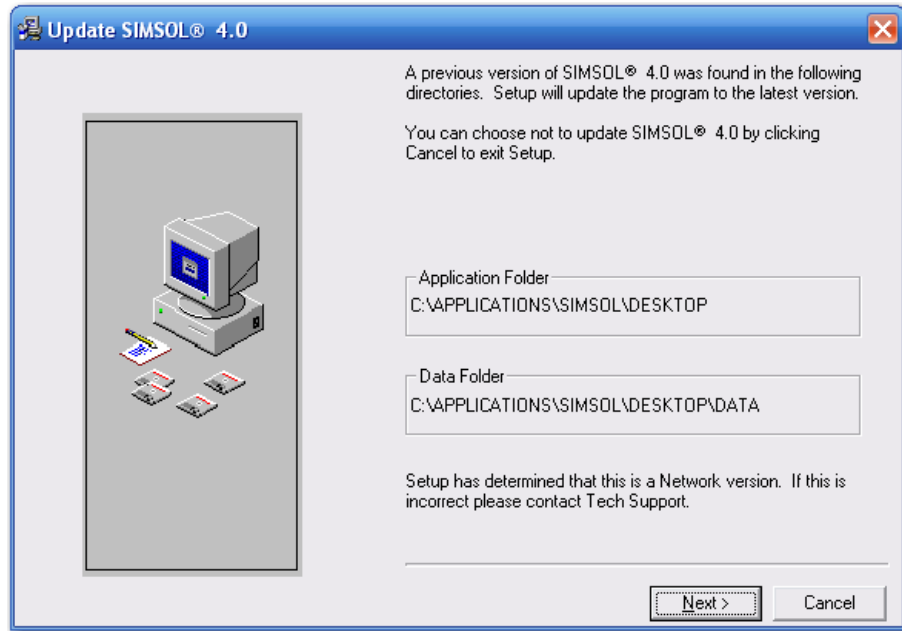
License Agreement. Click “Accept” and Next to continue.



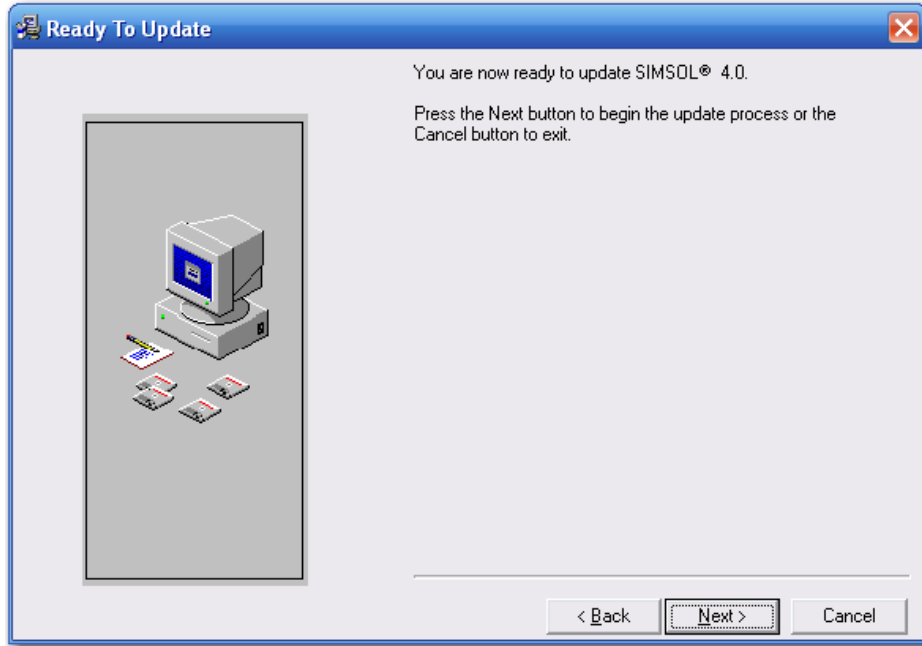
Installation Welcome Screen. Click Ok to continue



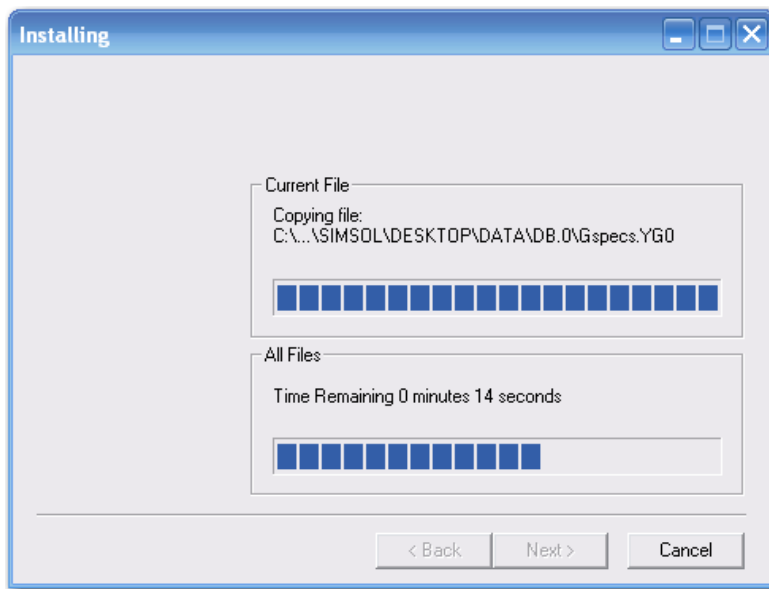
The installation will search your server machine for any prior installations of Simsol to determine whether you are performing a new installation or an update to a previously installed version. This process may take a couple minutes



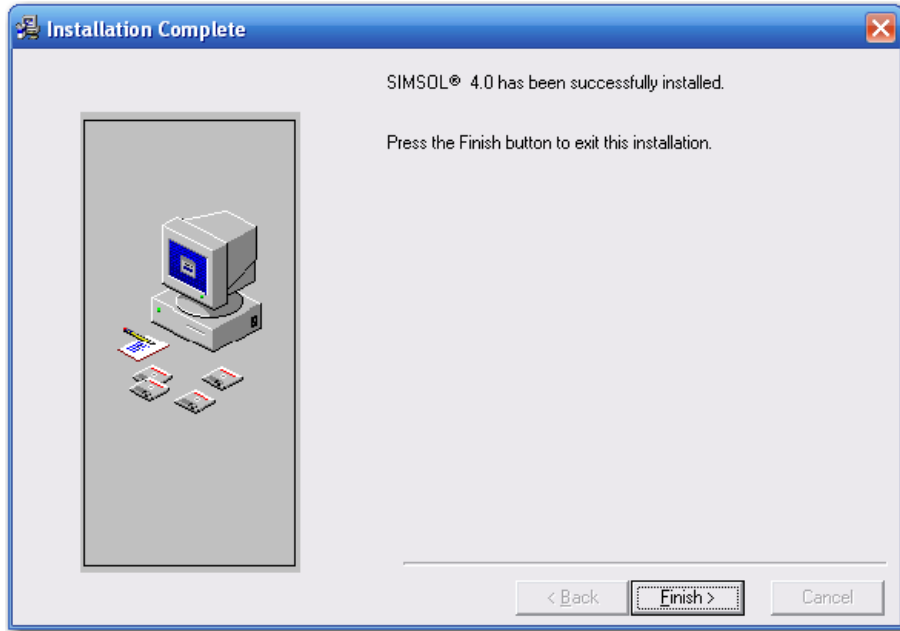
The installation will find your current version of Simsol and display the location of the Simsol application on your server. Verify that this location is correct and Click next to continue to the update. (If the location does not look correct or you are unsure, please cancel the update and contact your network administrator.)



Dialogue confirming that you are ready to start copying the update files to your current version of Simsol. Click Next to continue.



The update routine will begin and display the progress indicator screen. (Shown above)



Once the process of copying data is complete, this dialogue box will appear to confirm Simsol has been successfully updated. Click Finish to conclude the update.

***Please Note:** It is not required to run the client installation at this point. Simply open Simsol on any workstation that has access and begin utilizing the new version.

If you decide you would like to add accessibility to more workstations on your network, please refer to the client installation section on page 10 of this guide.

Thank you
Simsol Software

You have reached the end of this guide. For further assistance or questions, please contact our support staff toll-free at 1.800.447.4676